

COPPERWARES

PRIVATE LIMITED





husband and wife team Bruce and Nicola Johnson purchased Copperwares Private Limited in August 2000. Since the acquisition of this silverware and copperware business, the dynamic duo have aspired to the words of famous silversmith George Jensen who stated that, "Everyday objects should be beautiful and enrich lives."

Our Commitment

Copperwares Private Limited was originally established in 1960. Drawing on decades of experience, the Copperwares team of 130 craftsmen produce an extensive range of silver and copper plated hollowware which is sold under the Windsor Silverware, Royal Sable Copperware, Royal African Collection, Gastone and the Sunray Bangle brand names.

Under the leadership of the Johnsons, Copperwares is stronger today than ever. Since their start the couple have launched the Royal African Collection and purchased the Gastone brand. Exciting new contemporary designs and an African identity including teak wood, original stone carving and hand-blown glass have been introduced into some of the collections.

Copperwares now supply over 60 local customers and export to the USA, the UK, South Africa, Zambia, Malawi and Mocambique. South African customers include chains such as Spilhaus.

Copperwares are also suppliers to many exclusive hotels and lodges in Southern Africa such as The Victoria Falls Hotel, Meikles Africa and Singita.

A combination of meticulous craftsmanship, artistic design and the highest standard of manufacture continue to be the basis of Copperwares' success.

"Everyday objects should be beautiful & enrich lives" - GEORGE JENSEN

Contents

| | | | |
|-----------------------|-----|----------------------------|------|
| Our Commitment | Pg2 | Windsor Silverware | Pg6 |
| Quality Commitment | Pg3 | Royal Sable Copperware | Pg8 |
| Manufacturing Process | Pg3 | Sunray Bangle | Pg9 |
| Silver Care | Pg4 | Royal African Collection | Pg10 |
| Copper Care | Pg4 | Gastone | Pg11 |
| Care Instructions | Pg4 | Contact Details | Pg12 |
| Exclusive Services | Pg5 | Product Description Tables | Pg13 |

Quality Commitment

Hallmark of distinction on every Windsor Silverware product



In an uncompromising commitment to quality, all silverware has a minimum thickness of 26 microns and all products are guaranteed against manufacturing defects for 20 years. Copperwares are certified by the Standards Association of Zimbabwe.

The Copperwares team of 130 craftsmen has decades of experience



Manufacturing Process

Copperwares use the finest copper, mined in Africa and processed and rolled in Italy to the highest standards, for their silver plated and copper hollowware. The sheet copper ranges in thickness from 0.2mm to 1.6mm and is cut into different size disks depending on the product. The disks are spun over forming dies to create different shapes. A product can be made up of between one and five of these shapes. These shapes are then soldered together and copper wire, brass and cast handles are used to create handles and stems.

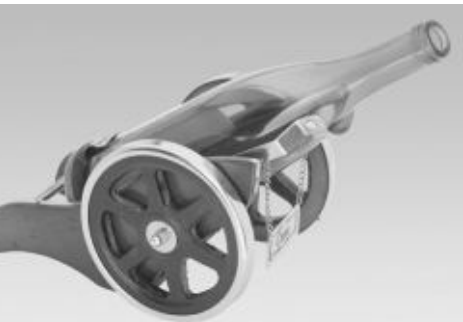
Once assembled the product is polished to give a high mirror shine. If the product is copper hollowware it is lacquered to protect the shine. If the product is silver plated hollowware it is electroplated with 26 microns (except on our cutlery range which is plated to 40 microns) of silver and given a final polish. We use the lost wax process for casting all intricate and detailed pieces; and pewter casting for our handles.



Silver Care

Caring for your silverware couldn't be easier:

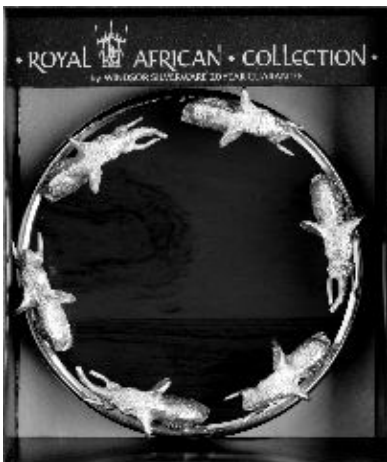
- Clean after use with a soft cloth in warm soapy water using a mild detergent.
- Polish once a month with a recognized silver polish using a soft cloth. Use one cloth to apply and another to remove polish.
- A light coat of silicone cream will protect and prolong the lustre of your silverware.
- **Silver and leather:** do not immerse in water. Clean the silver as per above instructions. Apply only leather polish to the leather with a damp cloth and remove with a soft damp brush.
- **Silver and teak:** clean the silver as per above instructions. Polish the teak with a recognized wood polish.



Copper Care

Our copperware takes care of itself:

- All copperware is lacquered and requires only dusting with a soft cloth.
- If necessary wash in warm soapy water. Do not use detergent. Shine with a soft cloth.
- An occasional waxing with a good silicone wax polish will protect the lacquer.



Care Instructions

For Sales Assistants

- All products on display should have a high shine and be free from finger marks (see silver care and copper care instructions below)
- Always handle items carefully to avoid scratching.
- Do not get water on leather items
- Do not get polish on leather items. If this should happen use a soft brush to clean the leather.

Exclusive Services

Choosing the perfect gift

Take the stress out of choosing the perfect gift for that special person or occasion. Email us for our extensive gift suggestions list to make an inspired choice.

Engraving

Add personal words or a name to give a finishing touch. As we use the highest quality silver plating all our silverware is suitable for engraving.

Corporate giftware

Impress your colleagues and customers with the Corporate Collection which has a wide variety of practical elegant gifts for the executive. This range can be personalized by engraving or etching a corporate insignia, name or logo onto the product.

Hotelware

We are suppliers to many exclusive hotels and lodges throughout Southern Africa, including members of the Leading Hotels of the World. Products can be developed to meet a hotel's specific requirements. We can also repair and restore most metal products (see Repair and Restoration below).

Special awards

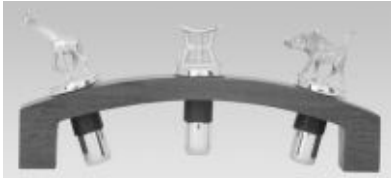
We can supply customized shields and trophies using etching, engraving and painting. Previous customers include Coca Cola, OK Zimbabwe, BP Shell, Dairibord, Willards and Premier Soccer League.

Silver care

The fine silver you choose today will become the treasured antique of tomorrow. Each product is supplied with cleaning instructions to ensure that you and future generations can keep your silverware looking stunning with the minimum amount of effort.

Repair and Restoration

- Repair and re-silver silver plated hollowware (eg tea sets, water jugs, ice buckets, vases, candelabrum etc)
- Repair and repolish stainless steel, pewter and aluminium products.
- Repair, polish and lacquer copper and brass.





Windsor Silverware

Windsor Silverware is the largest silver plated holloware manufacturer in Southern Africa supplying local and export markets. All our silverware has a minimum plating of 26 microns of silver, the highest in the world, and carries a 20 year guarantee.

Ranging in taste from classic to refreshingly modern, all our products combine the best of beautiful craftsmanship and artistic design.

The retro look is back and silverware is now featuring regularly in all the hottest new décor trends. With our commitment to quality you can be confident that all our products will continue to look stunning with the minimum amount of effort. We have a vast array of individual items and a host of collections including:

- tempting tableware
- splendid barware
- glamorous teaset and trays
- perfect christening, 21st and celebration gifts
- sophisticated desk features
- glorious trophies
- exciting leather, silver and glass combinations

Jensen said of silver that it should "capture the moonlight's glimmer" and every item of Windsor Silverware is a piece of perfection that glows with the surreal beauty of moonlight.

Tableware

Food simply tastes better when stylishly presented. So enhance your entertaining skills with a day of Windsor Silverware. Beginning with early morning tea and continental breakfast followed by a light lunch and a formal dinner there is a tableware combination to tempt every appetite.

Bar

Indulge in one of life's greatest pleasures with the Windsor Silverware bar collection which calls for a celebration every time. Whether enjoying relaxed sundowners, pre-dinner drinks or after dinner whisky and smokes everyone will appreciate the finer qualities and attention to detail.





Teasets and trays

A silver tea service will always make a statement and to own one is a privilege. Windsor Silverware has a choice of exquisite teasets and wonderfully detailed trays to make a glamorous addition to your home or for use in a more formal business environment. So go on and enjoy the perfect cup of tea every time!



Christening, 21st and celebration

Give the perfect gift at every step of life's journey. From a newborn baby to a young adult turning 21, from a couple first exchanging vows to celebrating 50 years in love nothing can match the eternal beauty of Windsor Silverware to acknowledge that special occasion.



Corporate

Impress your colleagues and flatter your customers with this superb collection from Windsor Silverware of desk features for the busy executive. As well as giving practical style to your worktop the addition of a personalized engraving or company logo will make a great executive present.



Trophy

Windsor Silverware can add a touch of star quality to every sporting occasion or awards ceremony with our glorious collection of trophy silverware. We can also manufacture anything from the smallest of shields to the most magnificent of football trophies. And our range can be fully customized and engraved to ensure company as well as individual recognition.



Silver 'n Leather Range

This exciting combination of imitation gameskin and silver from Windsor Silverware is so sophisticated and yet so natural you can almost smell the African bush. What a fabulous way to accessorise not only a home but a hotel or lodge. This unique range will definitely appeal to the wild streak in your guests and customers.





Royal Sable Copperware

At Royal Sable Copperware we stand true to our company commitment to make everyday products that are beautiful and enrich people's lives. Our range of copper hollowware products combine the best of meticulous craftsmanship and artistic design and glow with the warmth of the African sun.



Copper in the home comes from the old European tradition where things "were meant to last for generations." Today's homeowners love naturally occurring materials to be incorporated into their living space and choose copper products for their value for money, outstanding quality and their sheer beauty.

Metallic colours have surfaced as this year's most important design direction with copper and brass hues high on the list. According to the Pantone Institute which gathers information on colour trends worldwide "Copper and brass invite a nurturing feeling and in the stressful times we're living in the need to embody warmth resonates with a lot of people." All of the products in the Royal Sable Copperware range are either available in copper or can be produced in brass by customer request.



People are turning again to copper to add refinement and a sense of luxury to their homes. The rich red gold hues of Royal Sable Copperware are so warm and homely they invite people in as well as glamorizing a setting.

Copper cookware

Copper cookware has been the preferred choice of many chefs and both professional and amateur cooks for generations.



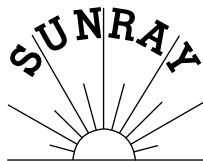
Royal Sable Copperware has two great chaffing dishes and a fabulous fondue set that make for great entertaining. Copper can withstand 2000° F and responds quicker to temperature changes and distributes heat more efficiently than stainless steel so you have greater control over the cooking process. Copper is biostatic which means that bacteria will not grow on its surface and is a true pleasure in the kitchen and dining room when brightly gleaming.

Copper Bracelets

Our range of Royal Sable Copper Bracelets are a great fashion accessory as well as having amazing health benefits for arthritis sufferers. The symptoms of pain caused by arthritis can be caused by a lack of copper element in the muscles. The natural moisture on the surface on the skin reacts with the electrical potential of the surface of the copper and tiny amounts of the high purity element are absorbed through the skin to correct the deficiency. Our bracelets can be worn unobtrusively and we have a range of thicknesses to suit both men and women. They are beautifully made with a choice of plain or weaved design. They can be opened or closed with a squeeze to fit any wrist size.

Giftware

The rich metallic earth tones of copper are continuing to grace new products. The red gold hues of Royal Sable copper hollowware glow with the warmth of the African sun and will make an inspired addition to any home décor.



Sunray Bangle

Why do thousands of intelligent people choose to wear the Sunray copper bangle every day? The simple answer is that the subtle and sophisticated design of the Sunray copper bangle looks great on both men and women and provides effective pain relief to sufferers of arthritis and rheumatism. Copper bangles have long been renowned for their healing properties and The American Arthritis Foundation calls copper bracelets a "proven remedy."

Copperwares have been making copper bangles for over 40 years but the combination of copper and zinc in the Copperwares Sunray bangle is a more recent development. We discovered that the remedy actually has a scientific basis as the combination of copper and zinc together forms a thermo-couple. This thermo-couple produces a light flow of electric current which then stimulates acupuncture meridians throughout the body. The result was the development of the bi-metal Sunray bangle. The beautiful bi-metal Sunray bangle is made of pure copper with a zinc insert. The copper band comes in a choice of two styles - plain or open weaved which ensures lightness as well as making a trendy

fashion accessory. The bangles are offered in 5 sizes from small to extra large and can be opened or closed with a squeeze to fit any size of wrist. The rising sun emblem on the open ends adds to the overall beauty of the bangle.

The Sunray bangle is packaged with a choice of two backing cards. One backing card is aimed at the sportsman golfer, athlete, cricketer or rugby player who might be suffering from past sporting injuries. The second backing card is aimed at the fashion and tourist trade and contains the history of this great fashion accessory.

Letters from many grateful purchasers testify to the effectiveness of the Sunray bangle in providing relief from the pain and discomfort caused by arthritis, rheumatism, sciatica, backache and joint stiffness.



ROYAL • AFRICAN • COLLECTION

Royal African Collection

Africa's greatest treasure her abundant and awe-inspiring wildlife, guarded by royal warriors, is captured in the Royal African Collection.

The Royal African collection of plate silverware focuses on the dramatic "Big Five" - the unpredictable buffalo; the primitive rhino; the intelligent elephant; the noble lion and the elusive leopard. Also included in the collection is the baboon, chameleon, kudu, sable, warthog, frog, crocodile, guinea fowl, hyena, hippo, pangolin, wildebeest and many more. These remarkable animals embody the mystery and majesty of our great continent.

The Royal African Collection is handcrafted, cast in brass and plated with 26 microns of silver (except on our cutlery range which is plated to 40 microns). All items have a 20 year guarantee. The collection includes bottles stoppers, wine coasters, napkin rings, wine glass rings, teaspoons, wine glasses, teak cutting boards, picture frames, cutlery and corkscrews. All items are beautifully packaged in a royal blue box with the royal warrior motif.

The latest addition to our product range is the Royal African Collection Cutlery Range. This includes a full dinner service of cutlery presented in a stylish wooden canteen and cutlery accessories, such as, butter, cheese, bread and carving knives; serving, cocktail, chutney, sugar, and coffee spoons; salad servers; and cake slicers. The fronts of our cutlery are forged stainless steel 18/10 from Sheffield, England. The handles are cast in the lost wax process at Copperwares using our superior manufacturing process and commitment to quality. There are a variety of designs available.





Gastone

The Gastone range of original copper artwork is made by the Copperwares team of skilled craftsmen and hand painted by talented local artists. The range focuses on the magnificent wildlife and stunning scenery of Africa which is incorporated into each work of art.



Almost every piece of Gastone artwork has a common signature a "burst of sunrays" emanating from the centre of the copper background. This radiating sunray effect is achieved by our copper artisans who hand polish each piece. The copper artwork then has African bush scenery and village scenes individually handpainted on each piece by talented local artists making each piece unique.

All the animal motifs used in the Gastone range are remarkably realistic to life. Our craftsmen hand mould each one. copper powder is sprayed on primarily, then bitumen is rubbed into the details to create a 3D effect. The finishing touch is added where necessary with beautiful pine wood frames also manufactured by our craftsmen.



The Gastone collection includes copper murals, wall pictures, fire screens, wall clocks, maps, tables, tusk ornaments, jewellery boxes, trays and ashtrays. We also have a selection of beautiful religious pieces including crosses and wall hangings. All items excluding miniature sizes are beautifully packaged in customized boxes.

We export to the USA, India, China, South Africa, Kenya, Uganda, Nigeria, Tanzania, Botswana and Zambia and our international customers include the United States Marine Corps.

Providing a dramatic focal point the Gastone range of copper artwork is rich in detail and will enhance your home décor with a unique style.





COPPERWARES

PRIVATE LIMITED



For more details on the collections please contact:
Copperwares Private Limited,
Bruce Johnson, Nicola Johnson &
Carla Govindan.

Factory & Showroom -
24 Neill Avenue, Msasa,
PO Box AY 156, Amby,
Harare, Zimbabwe.
Tel + 263 4 486255,
486840, 486140
Fax + 263 4 486526

E-mail sales@copperwares.co.zw
or bruce@copperwares.co.zw





Windsor Silverware

Product

Function

Special Features

| | | |
|----------------------|---|--|
| Ashtrays | To collect ash from cigarettes and cigars | |
| Beer Tankards | A utensil for drinking beer | |
| Bells | To attract attention | |
| Bowls | Finger bowls - to clean hands after eating or for serving sweets, nuts etc; Rose bowl - to contain a rose arrangement; Fruit bowls - to contain a fruit arrangement | |
| Cakelifters | To serve slices of cake | |
| Cake Stands | To present a cake | |
| Candle Snuffer | To extinguish the flame of a candle | Can be sold for religious purposes eg Jewish festivals |
| Candlesticks | To hold a single candle | |
| Candlabrum | To hold two or three candles | Has a removable candlesnuffer in the centre that can then be used for a third candle |
| Christening Gifts | To celebrate the christening of a child | All christening items except mugs are beautifully packaged in silver and blue boxes |
| Cloche/Food Dome | To cover food | |
| Coasters | For placing drinks on; to protect the wood of tables | |
| Cocktail Shaker | To mix cocktails | |
| Cruet Sets | To hold salt, pepper and mustard containers | |
| Desk Range | To hold pens and desk pads and greatly enhance the appearance of a desktop | |
| Dishes | To contain butter and to serve food | Butter dish has an insert for draining water |
| Eggcups | To serve boiled eggs | |
| Hip Flasks | To contain alcohol when travelling | Carries 5.5 fluid ounces |
| Ice Buckets | To contain ice | Have a built in drip tray |
| Jam Container | To contain jam and other preserves | |
| Keys - 21st Birthday | To be given as 21st birthday presents | |
| Liquor Tags | To identify alcoholic drinks | |
| Match Box Cover | To protect a match box | |
| Milk Churns | Decorative container | |
| Scales | Ornamental weighing scale | |
| Shields & Trophies | To be presented as an acknowledgement of achievement | Can be customised |
| Soup Tureens | Container for serving soup | |
| Spoons | For serving food | Spoons can also be customised |
| Table Napkin Rings | For holding napkins | |
| Tea Sets | For serving tea and coffee | |
| Toast Rack | For serving toast | |
| Tot Measure | For measuring alcohol to be served in a drink | |
| Trays | For serving drinks and food | |
| Trays - Snack | For serving snacks | |
| Vases | For holding flowers | |
| Walking Stick | To assist with walking | |
| Water Pitchers | To serve water or soft drinks | Have an extended spout to prevent ice dropping out when pouring |
| Wine Bottle Holders | To hold a bottle of wine and protect the surface beneath | |
| Wine Stoppers | To seal an unfinished bottle of wine | |



Royal Sable Copperware

| <i>Product</i> | <i>Function</i> | <i>Special Features</i> |
|----------------------------|---|---|
| Beer Mugs | A utensil for drinking beer | Comes in an assortment of styles and sizes |
| Bottle Holder Gun Carriage | To hold a bottle of wine and protect the surface beneath | |
| Bowls | Finger bowls - to clean hands after eating or for serving sweets, nuts etc; Rose bowl - to contain a rose arrangement; Fruit bowls - to contain a fruit arrangement | |
| Chaffing Dish | To keep food hot prior to serving | Comes in 2 styles; can withstand 2000° F |
| Copper Bracelets | Remedial bracelet and fashion accessory | Five sizes - S to XL; lacquered to prevent tarnishing |
| Fondue Set | An enjoyable and sociable way to cook and serve a meal | |
| Milk Churns | A decorative container | |
| Paraffin Lamp | Used for indoor and outdoor decorative lighting | Has a glass cover to protect from the wind |
| Planters | to hold pot plants and protect surface beneath | |
| Trays | For serving drinks and food | |
| Vases | For holding flowers | |
| Water Jugs | To serve water or soft drinks | Have an extended spout to prevent ice dropping out when pouring |



Sunray Bangle

| <i>Product</i> | <i>Description</i> | <i>Function</i> | <i>Special Features</i> |
|-----------------------|-------------------------------------|---|--|
| Sunray Bangle Twisted | Weaved copper band with zinc insert | To provide relief from the pain caused by arthritis, rheumatism, sciatica, backache and joint stiffness. A fashion accessory. | Offered in five sizes from small to extra large. All bangles are lacquered to prevent tarnishing in transit. This lacquer soon wears off on skin contact making the bangle more effective. |
| Sunray Bangle Plain | Plain copper band with zinc insert | | |



ROYAL · AFRICAN · COLLECTION

Royal African Collection

Each product features a selection of finely crafted African animals. some of the products are enhanced with either teak or glass or both. The Royal African Collection is extensive and lends an air of sophistication and grace with an African feel.

| <i>Product</i> | <i>Function</i> |
|--------------------------------------|--|
| Bottle Stopper - Rubber Whole Animal | To seal an unfinished bottle of wine |
| Stand For Bottle Stoppers | To hold a collection of bottle stoppers |
| Coffee Spoon | To stir coffee |
| Corkscrew | To open a bottle of wine |
| Cuff Links | To secure the sleeves of a man's shirt |
| Finger Bowl - Elephant | To serve sweets, nuts etc or to clean hands after eating |
| Gravy Spoon | To serve gravy or other sauce |
| Hip Flask | To contain alcohol when travelling |
| Ice Bucket | To hold ice to serve in drinks |
| Ice Tongs | To serve ice for drinks |
| Name Place Settings | To hold name tags |
| Paper Knife | To open sealed envelopes |
| Picture Frame | To hold a picture |
| Punch Bowl and Eight Cups | To serve punch |
| Spoon | To serve food |
| Swizzle Stick | To stir drinks |
| Table Napkin Rings | For holding napkins |
| Teak Tray with Elephant Handles | For serving drinks and food |
| Tot Measure | For measuring alcohol to be served in a drink |
| Walking Stick | To assist a person with walking |
| Wine Bottle Coaster | To hold a bottle of wine and protect the surface beneath |
| Wine Glass Rings | To decorate and enhance wine glasses |





Gastone

Gastone products are manufactured with aesthetic appeal in mind. They greatly enhance interior decor in homes, offices, churches, hotels, etc. Many of the products have a very practical function of protecting fires, containing objects, telling the time, placing objects and drinks on and serving food and drinks.

Product

Description

| | |
|----------------------------|--|
| Africa Wall Plaque | Made in the shape of Africa with handpainted bush scenes and three magnificent mounted animal motifs. |
| Ashtray | A simple design with a choice of a handpainted traditional village scene or the awesome Victoria Falls. |
| Map of Country Wall Plaque | Made in the shape of Zimbabwe with handpainted scenery and a large animal motif. |
| Bulldog on Wooden Base | A handsome bulldog motif with patina finish mounted on a pine wood base. |
| Religious Plaques | A choice of simple crosses including plain or with a crucifixion figure and a range of moving religious scenes including The Last Supper, Praying Hands and religious verses. |
| Frame With Leather Insert | A leather insert with laser engraving of sketched wildlife scenes with copper corners and pine frame. |
| Freestanding Animal | Magnificent animal motif with patina finish with a choice of elephant, buffalo, rhino, kudu, giraffe, sable and lion. |
| Jewellery Box | Beautifully crafted jewellery box with handpainted traditional village scene. The inside has a sliding hinge with two layers and is felt lined. |
| Wall Plaques | A wide range of backgrounds including square, rectangular, round, oval, octagonal and shield shapes. Handpainting includes traditional African village scenes and bush scenery. Animal motifs include a choice of wild animals and African tribal figures. Ranging in size from 124cm x74cm to 9cm by 9cm. |
| Pendulum Wall Clock | A large sized clock with moving hands and swinging pendulum and a choice of handpainted African scenery and mounted wild animal motifs. Also made with leather insert feature with laser engraving of sketched wildlife scenes. |
| Rectangular Firescreen | A truly splendid piece of artwork with pine frame, handpainted African bush scenes and a dominating animal motif to be placed in front of a fireplace. |
| Table | A four legged pine table with lowered copper base with handpainted African bush scenery and a variety of wild animal motifs. Has a glass top. |
| Round Table | A three legged pine table with copper centre and cross and copper patina border with African village scene or animals. |
| Gongs | A copper disc featuring animals or village scene supported by a wooden teak base and gavel. |
| Soldiers On Wooden Base | A proud motif with patina finish of soldiers raising a flagpole mounted on a pine base. |
| Tray | With beaten copper handles and handpainted copper base and a choice of traditional African village scene or the impressive Victoria Falls for serving food and drinks. |
| Tusk Ornament | A range of freestanding pine bases with a fine pair of horns enclosing a piece of copper artwork. Shapes include round, octagonal, rectangular and oval. Handpainted African bush scenery and a variety of wild animal motifs. Ranging in size from 54cm x 33cm to 17cm x 13cm |
| Wall Clocks | A wide range of backgrounds including round, octagonal, oval, square or shield shapes. Also made in the shape of Africa or a specific country. All clocks have moving hands and copper backgrounds with a choice of handpainted African bush scenery and mounted wild animal motifs or an animal motif border. |